

# Outer Dowsing Offshore Wind

## Environmental Statement

### Chapter 17 Seascape, Landscape and Visual

#### Volume 2 Figures

#### Part 1 of 3

Date: March 2024

Document Reference: 6.2.17

Pursuant to APFP Regulation: 5(2)(a)

Rev: 1.0

Company:	<b>Outer Dowsing Offshore Wind</b>	Asset:	<b>Whole Asset</b>			
Project:	<b>Whole Wind Farm</b>	Sub Project/Package:	Whole Asset			
Document Title or Description:	Chapter 17 Seascape, Landscape and Visual Figure					
Internal Document Number:	PP1-ODOW-DEV-CS-FIG-0017	3 <sup>rd</sup> Party Doc No (If applicable):	N/A			
Outer Dowsing Offshore Wind accepts no liability for the accuracy or completeness of the information in this document nor for any loss or damage arising from the use of such information.						
<b>Rev No.</b>	<b>Date</b>	<b>Status / Reason for Issue</b>	<b>Author</b>	<b>Checked by</b>	<b>Reviewed by</b>	<b>Approved by</b>
01	March 2024	DCO Application	GoBe	GoBe	Shepherd & Wedderburn	Outer Dowsing

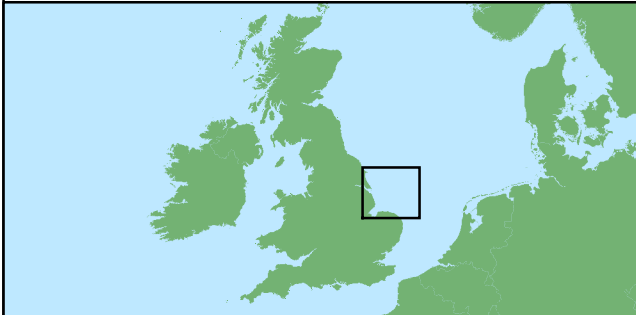
## Table of Figures

- Figure 17.1 SLVIA Project Design Envelope - Maximum Design Scenario (document reference 6.2.17.1)
- Figure 17.2 SLVIA Study Area (document reference 6.2.17.2)
- Figure 17.3 Array Area Blade Tip ZTV (Maximum Height) (A3) (document reference 6.2.17.3)
- Figure 17.4 Array Area Blade Tip ZTV (Maximum Height) (A1) (document reference 6.2.17.4)
- Figure 17.5 Array Area Blade Tip ZTV with Surface Feature Screening (A3) (document reference 6.2.17.5)
- Figure 17.6 Array Area Blade Tip ZTV with Surface Feature Screening (A1) (document reference 6.2.17.6)
- Figure 17.7 Array Area Hub Height ZTV (Maximum Hub Height) (A3) (document reference 6.2.17.7)
- Figure 17.8 Array Area Horizontal Angle ZTV (Maximum Height) (A3) (document reference 6.2.17.8)
- Figure 17.9 Array Area Blade Tip ZTV with Seascape Character (document reference 6.2.17.9)
- Figure 17.10 Array Area Blade Tip ZTV with Landscape Character (document reference 6.2.17.10)
- Figure 17.11 Array Area Blade Tip ZTV with Landscape Designations (document reference 6.2.17.11)
- Figure 17.12 Array Area Blade Tip ZTV with Visual Receptors (document reference 6.2.17.12)

### Legend


- Indicative Turbine Locations
- Indicative Offshore Platforms
- Indicative Offshore Reactive Compensation Platform (ORCP)
- Viewpoints
- Array Area
- Offshore Export Cable Corridor (ECC)
- Offshore Reactive Compensation Platform (ORCP) Area
- 10km Radii
- 60km Study
- Offshore Reactive Compensation Platform (ORCP) 30km Study Area
- Artificial Nesting Structure (ANS) Area
- Biogenic Reef Restoration Area
- County Boundary
- District / Unitary Authority Boundary

EMODnet DTM for European Sea Regions (m)  
High : 4.23  
Low : -98.28



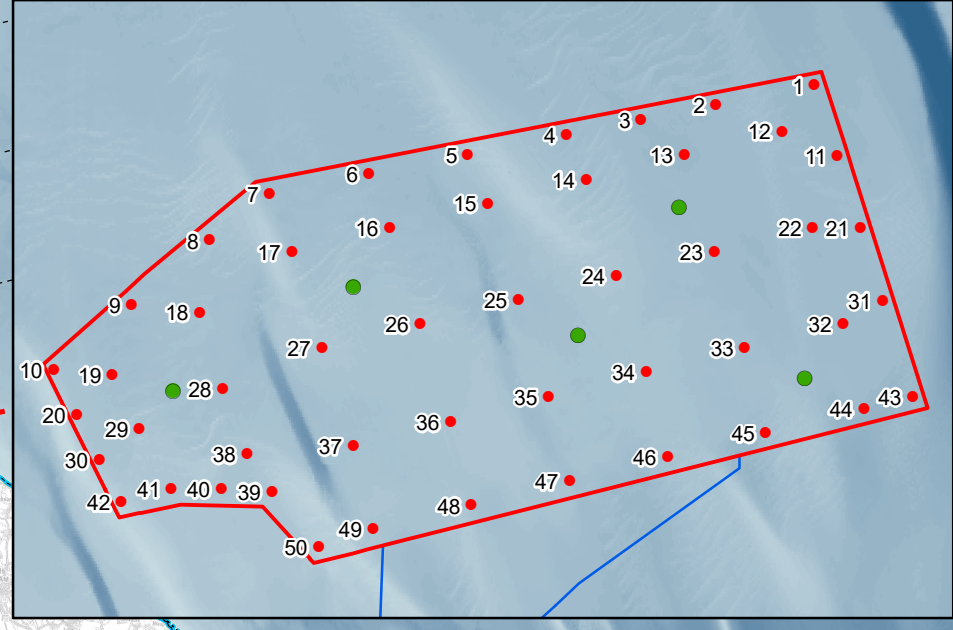
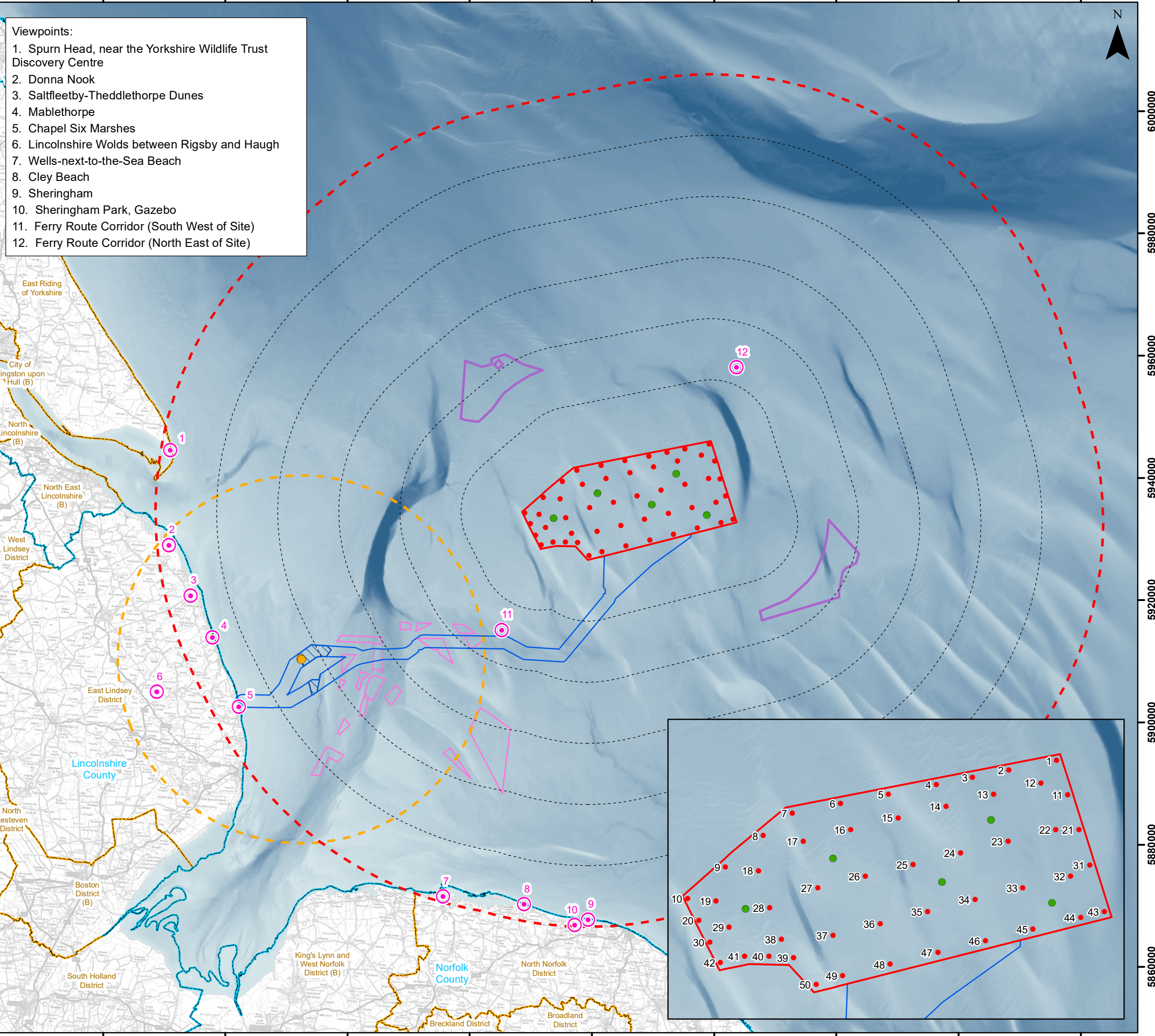
Coordinate System: WGS 1984 UTM Zone 31N  
0 5 10 15 20 km  
Scale: 1:600,000  
A3 Page Size

Environmental Statement  
SLVIA Project Design Envelope  
- Maximum Design Scenario  
Figure 17.1



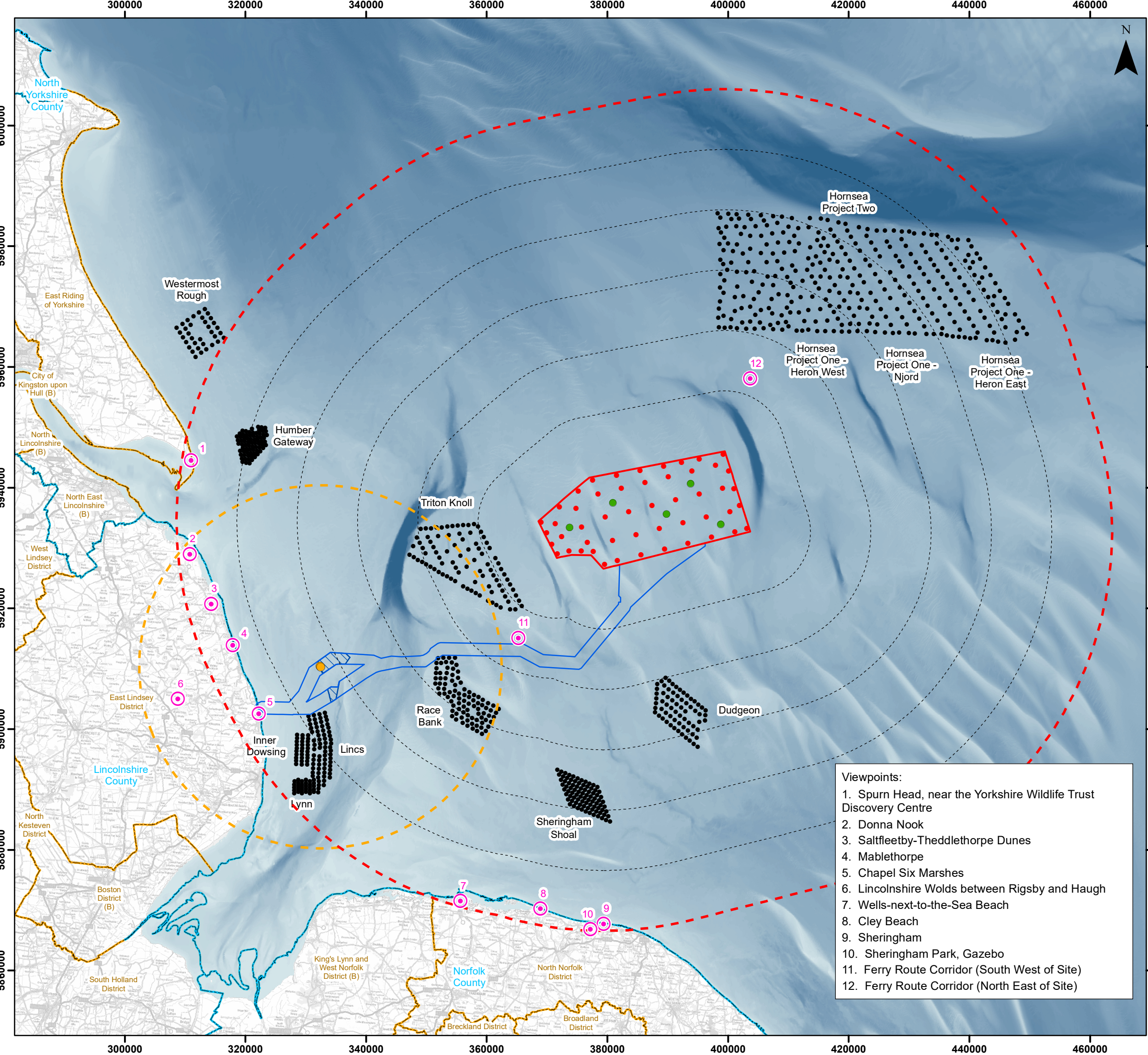
Date: 12/03/2024  
Produced By: OPEN  
Revision: v0.4

Contains ESRI Basemapping;  
PART OF SLR



- Viewpoints:
1. Spurn Head, near the Yorkshire Wildlife Trust Discovery Centre
  2. Donna Nook
  3. Saltfleetby-Theddlethorpe Dunes
  4. Mablethorpe
  5. Chapel Six Marshes
  6. Lincolnshire Wolds between Rigsby and Haugh
  7. Wells-next-to-the-Sea Beach
  8. Cley Beach
  9. Sheringham
  10. Sheringham Park, Gazebo
  11. Ferry Route Corridor (South West of Site)
  12. Ferry Route Corridor (North East of Site)

Document Path: P:\2021\211613\_OuterDowsing\GIS\211613\_GTR4\ES\OFFSHORE\005366\00012\_06566\_0\_211613\_ODOW\_ES\_SLVIA\_Fig17.1\_Design\_Envelope.mxd



### Legend

- Indicative Turbine Locations
- Indicative Offshore Platforms
- Indicative Offshore Reactive Compensation Platform (ORCP)
- Viewpoints
- Array Area
- Offshore Export Cable Corridor (ECC)
- Offshore Reactive Compensation Platform (ORCP) Area
- 10km Radii
- 60km Study Area
- Offshore Reactive Compensation Platform (ORCP) 30km Study Area
- County Boundary
- District / Unitary Authority Boundary

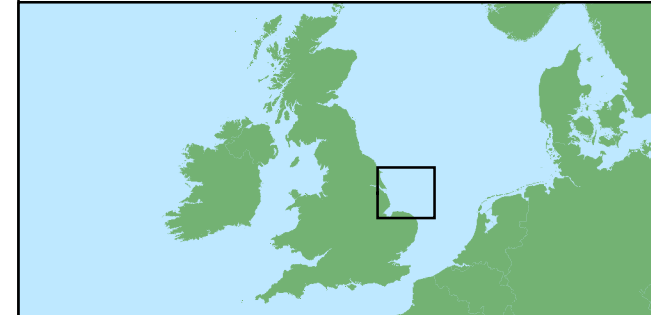
Cumulative Wind Farm Status:

- Operational

EMODnet DTM for European Sea Regions (m)

High : 4.23

Low : -98.28



Coordinate System: WGS 1984 UTM Zone 31N

0 5 10 15 20 km

**Scale: 1:600,000**

A3 Page Size

- Viewpoints:**
1. Spurn Head, near the Yorkshire Wildlife Trust Discovery Centre
  2. Donna Nook
  3. Saltfleetby-Theddlethorpe Dunes
  4. Mablethorpe
  5. Chapel Six Marshes
  6. Lincolnshire Wolds between Rigsby and Haugh
  7. Wells-next-to-the-Sea Beach
  8. Cley Beach
  9. Sheringham
  10. Sheringham Park, Gazebo
  11. Ferry Route Corridor (South West of Site)
  12. Ferry Route Corridor (North East of Site)

Environmental Statement

SLVIA Study Area

Figure 17.2

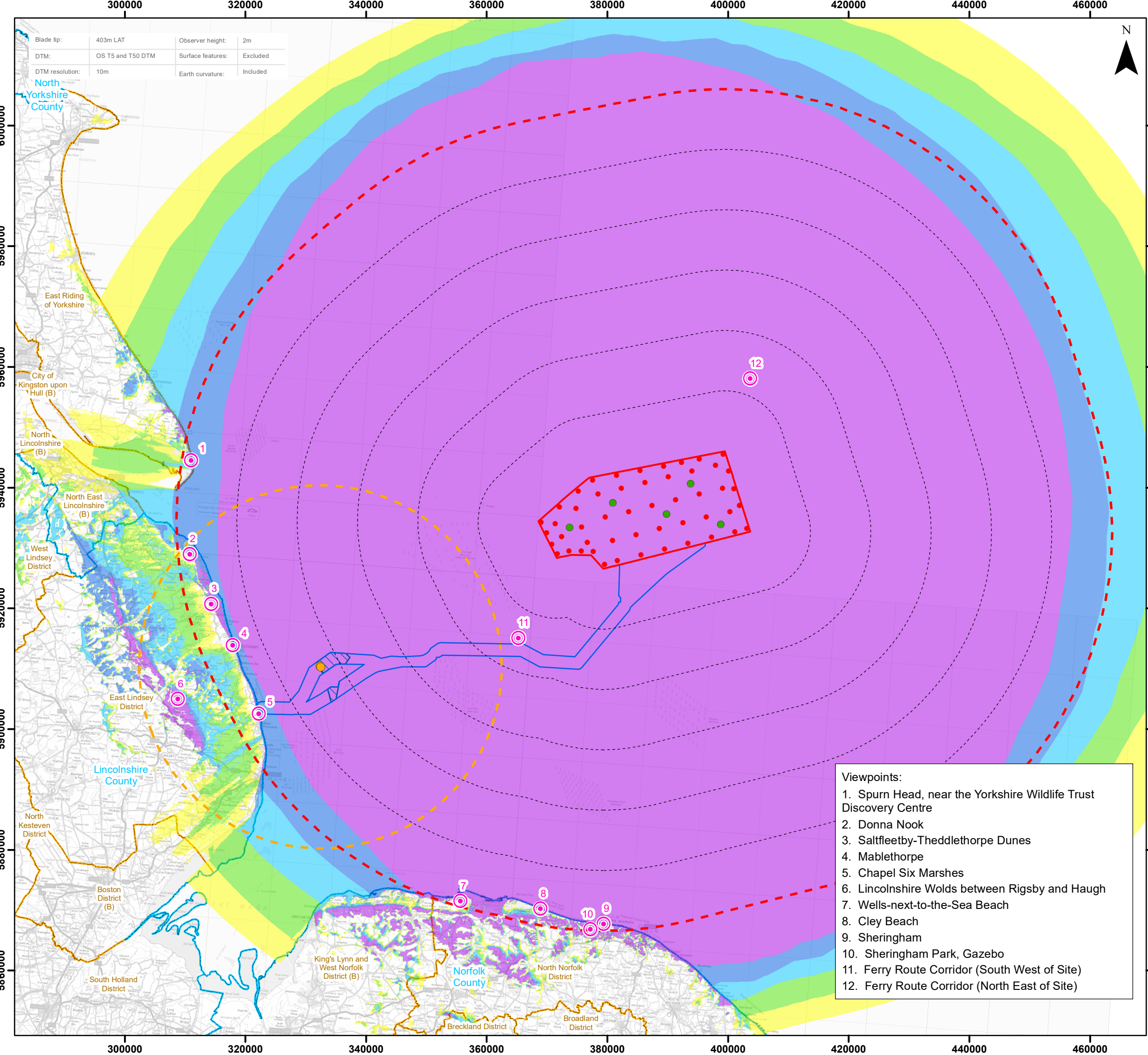
**OUTER DOWSING**  
OFFSHORE WIND

Date: 12/03/2024  
Produced By: OPEN  
Revision: v0.4

Contains ESRI Basemapping;  
PART OF SLR

© Crown copyright and database rights (2024) Ordnance Survey 0100031673  
Contains public sector information licensed under the Open Government Licence v3.0.  
© EMODnet Bathymetry Consortium (2022); EMODnet Digital Bathymetry.

Document Path: P:\2021\12\1613\_OuterDowsing\GIS\211613\_GTR4\ES\OFFSHORE\005366\00012\_0657\_0\_211613\_ODOW\_ES\_SLVIA\_Fig17.2\_Study\_Area.mxd

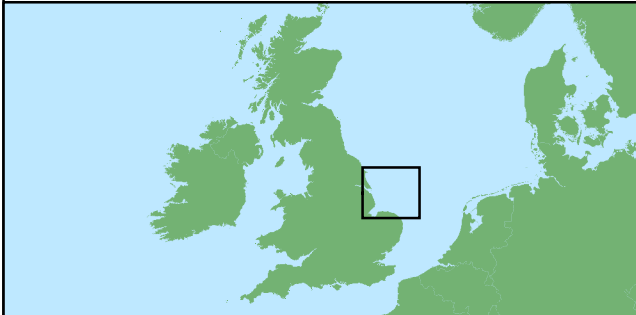


Blade tip:	403m LAT	Observer height:	2m
DTM:	OS T5 and T50 DTM	Surface features:	Excluded
DTM resolution:	10m	Earth curvature:	Included

### Legend

- Indicative Turbine Locations
  - Indicative Offshore Platforms
  - Indicative Offshore Reactive Compensation Platform (ORCP)
  - Array Area
  - Offshore Export Cable Corridor (ECC)
  - Offshore Reactive Compensation Platform (ORCP) Area
  - 10km Radii
  - 60km Study Area
  - Offshore Reactive Compensation Platform (ORCP) 30km Study Area
  - County Boundary
  - District / Unitary Authority Boundary
- Blade Tip ZTV**
- No of Blade Tips Theoretically Visible
- 1 - 10
  - 11 - 20
  - 21 - 30
  - 31 - 40
  - 41 - 50

- Viewpoints:**
1. Spurn Head, near the Yorkshire Wildlife Trust Discovery Centre
  2. Donna Nook
  3. Saltfleetby-Theddlethorpe Dunes
  4. Mablethorpe
  5. Chapel Six Marshes
  6. Lincolnshire Wolds between Rigsby and Haugh
  7. Wells-next-to-the-Sea Beach
  8. Cley Beach
  9. Sheringham
  10. Sheringham Park, Gazebo
  11. Ferry Route Corridor (South West of Site)
  12. Ferry Route Corridor (North East of Site)



Coordinate System: WGS 1984 UTM Zone 31N

0 5 10 15 20 km

Scale: 1:600,000

A3 Page Size

Environmental Statement

Array Area Blade Tip ZTV (Maximum Height) (A3)

Figure 17.3

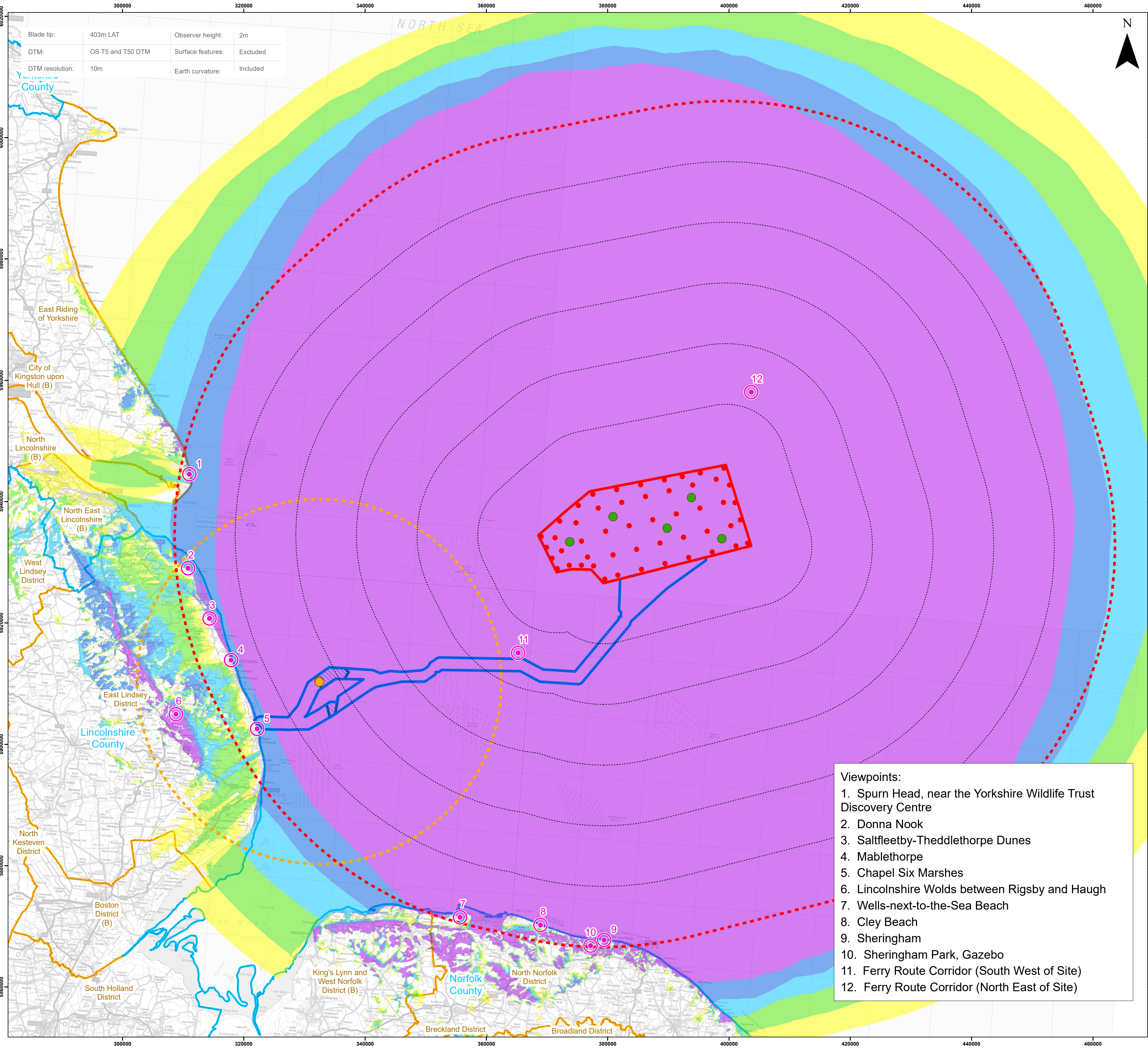


Date: 12/03/2024  
 Produced By: OPEN  
 Revision: v0.4

Contains ESRI Basemapping;  
 optimised environments  
 PART OF SLR

© Crown copyright and database rights (2024) Ordnance Survey 0100031673  
 Contains public sector information licensed under the Open Government Licence v3.0.

Document Path: P:\2021\12\1613 OuterDowsing\GIS\211613\_GTR4\ES\OFFSHORE\0536\00012\_0658\_0\_211613\_ODOW\_ES\_SILVA\_Fig17.3\_BT\_ZTV.mxd

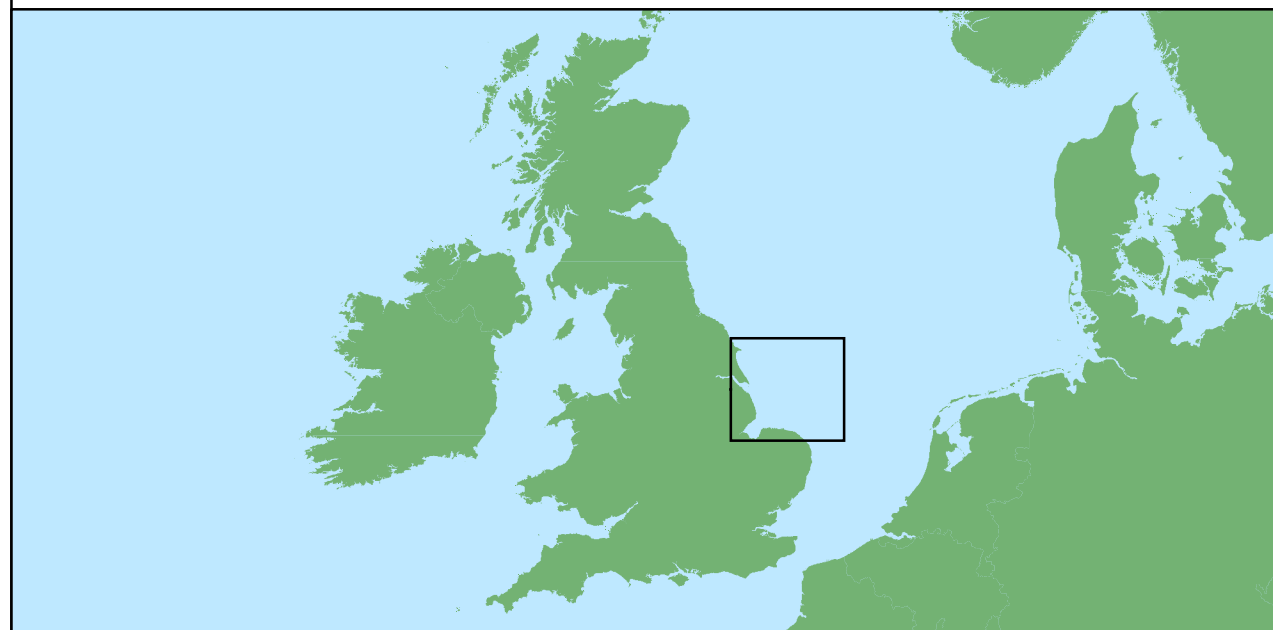


Blade tip:	403m LAT	Observer height:	2m
DTM:	OS T5 and T50 DTM	Surface features:	Excluded
DTM resolution:	10m	Earth curvature:	Included

### Legend

- ⊙ Viewpoints
  - Indicative Turbine Locations
  - Indicative Offshore Platforms
  - Indicative Offshore Reactive Compensation Platform (ORCP)
  - Array Area
  - Offshore Export Cable Corridor (ECC)
  - Offshore Reactive Compensation Platform (ORCP) Area
  - 10km Radii
  - 60km Study Area
  - Offshore Reactive Compensation Platform (ORCP) 30km Study Area
  - County Boundary
  - District / Unitary Authority Boundary
- Blade Tip ZTV**
- No of Blade Tips Theoretically Visible
- 1 - 10
  - 11 - 20
  - 21 - 30
  - 31 - 40
  - 41 - 50

- Viewpoints:**
1. Spurn Head, near the Yorkshire Wildlife Trust Discovery Centre
  2. Donna Nook
  3. Saltfleetby-Theddlethorpe Dunes
  4. Mablethorpe
  5. Chapel Six Marshes
  6. Lincolnshire Wolds between Rigsby and Haugh
  7. Wells-next-to-the-Sea Beach
  8. Cley Beach
  9. Sheringham
  10. Sheringham Park, Gazebo
  11. Ferry Route Corridor (South West of Site)
  12. Ferry Route Corridor (North East of Site)



Coordinate System: WGS 1984 UTM Zone 31N

0 20 40 km

Scale: 1:300,000

A1 Page Size

Environmental Statement

Array Area Blade Tip ZTV (Maximum Height) (A1)

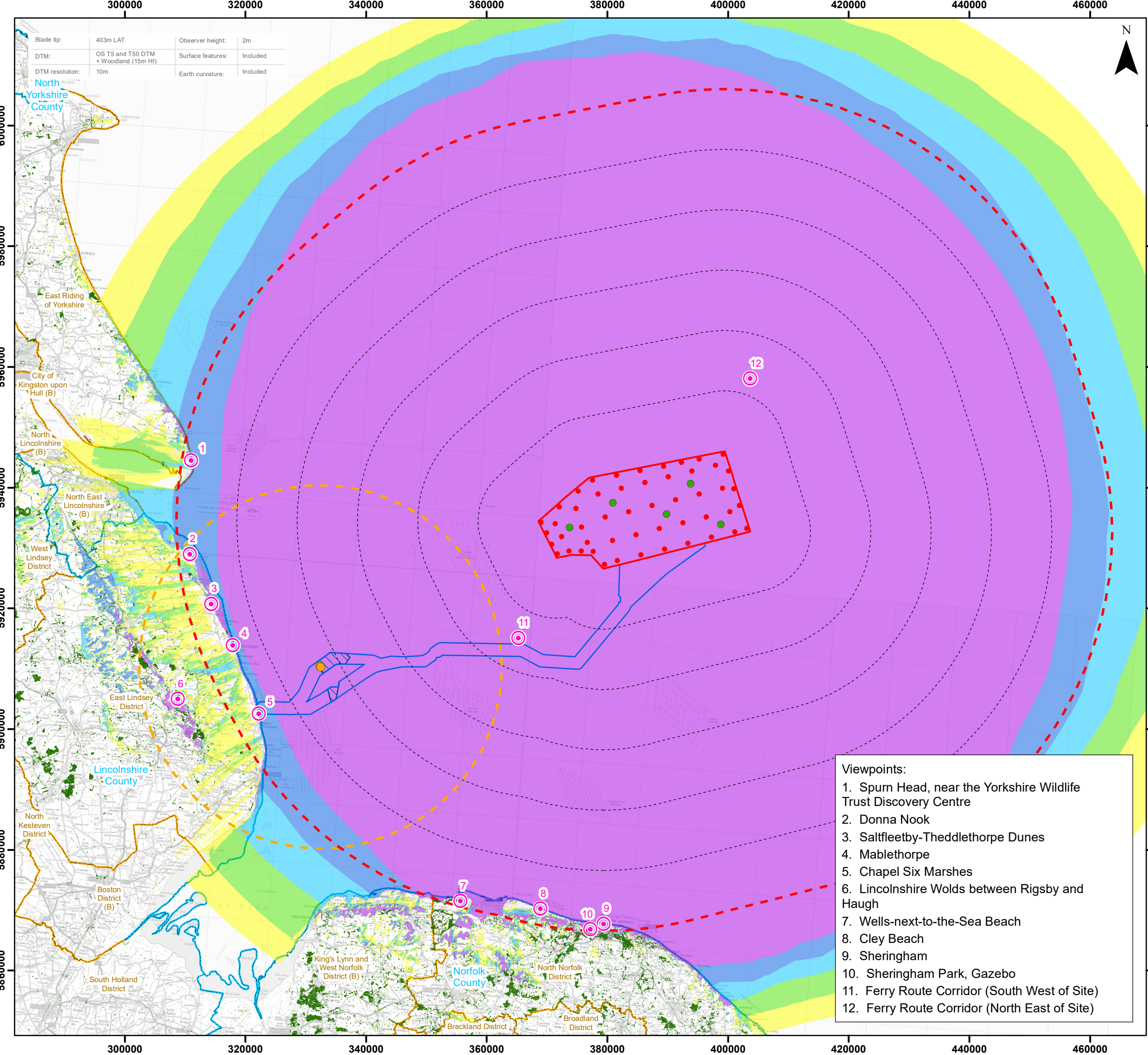
Figure 17.4



Date: 12/03/2024  
 Produced By: OPEN  
 Revision: v0.4

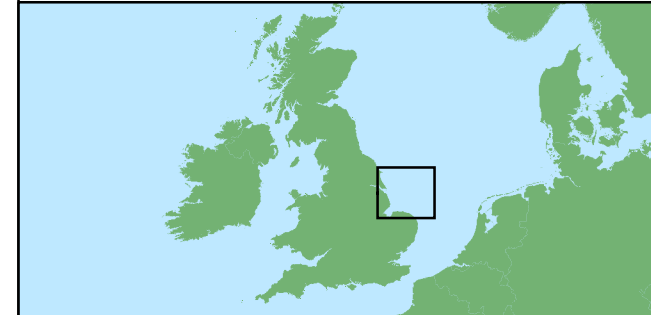
**open**  
 optimised environments  
 PART OF SLR

Contains ESRI Basemapping;



**Legend**

- Indicative Turbine Locations
  - Indicative Offshore Platforms
  - Indicative Offshore Reactive Compensation Platform (ORCP)
  - ⊙ Viewpoints
  - ▭ Array Area
  - ▭ Offshore Export Cable Corridor (ECC)
  - ▭ Offshore Reactive Compensation Platform (ORCP) Area
  - ⋯ 10km Radii
  - ⋯ 60km Study
  - ⋯ Offshore Reactive Compensation Platform (ORCP) 30km Study Area
  - ▭ County Boundary
  - ▭ District / Unitary Authority Boundary
  - Woodland
- Screening Blade Tip ZTV
- No of Blade Tips Theoretically Visible
- 1 - 10
  - 11 - 20
  - 21 - 30
  - 31 - 40
  - 41 - 50



Coordinate System: WGS 1984 UTM Zone 31N

0 5 10 15 20 km

Scale: 1:600,000

A3 Page Size

- Viewpoints:**
1. Spurn Head, near the Yorkshire Wildlife Trust Discovery Centre
  2. Donna Nook
  3. Saltfleetby-Theddlethorpe Dunes
  4. Mablethorpe
  5. Chapel Six Marshes
  6. Lincolnshire Wolds between Rigsby and Haugh
  7. Wells-next-to-the-Sea Beach
  8. Cley Beach
  9. Sheringham
  10. Sheringham Park, Gazebo
  11. Ferry Route Corridor (South West of Site)
  12. Ferry Route Corridor (North East of Site)

Environmental Statement

Array Area Blade Tip ZTV with Surface Feature Screening (A3)

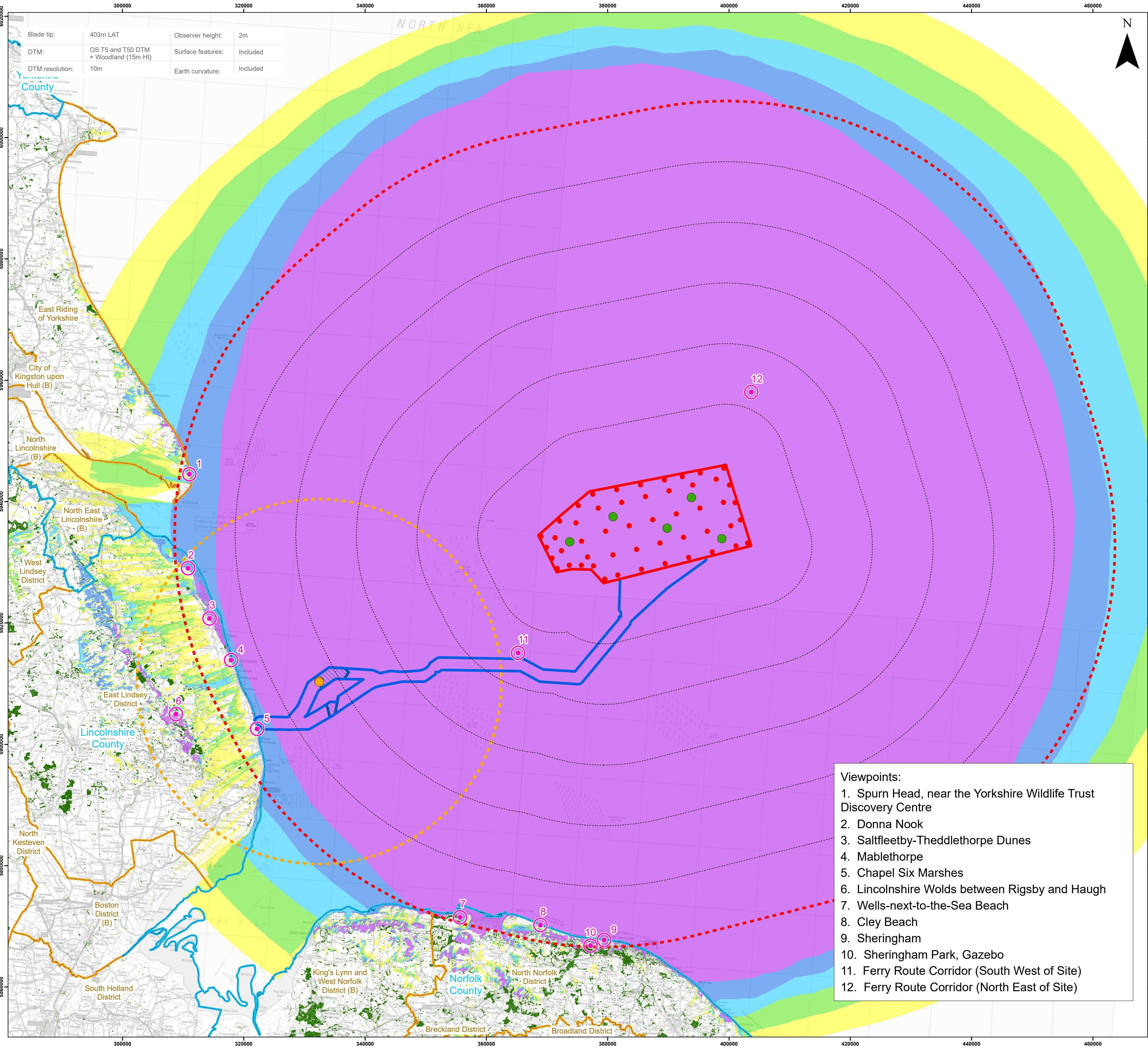
Figure 17.5



Date: 12/03/2024  
 Produced By: OPEN  
 Revision: v0.4

Contains ESRI Basemapping;  
 optimised environments  
 PART OF SLR

Document Path: P:\2021\12\1613\_OuterDosing\GIS\211613\_GTR4\ES\OFFSHORE\0536\00012\_0660\_0\_211613\_ODOW\_ES\_SLVIA\_Fig17.5\_BT\_ScreeningZTV.mxd

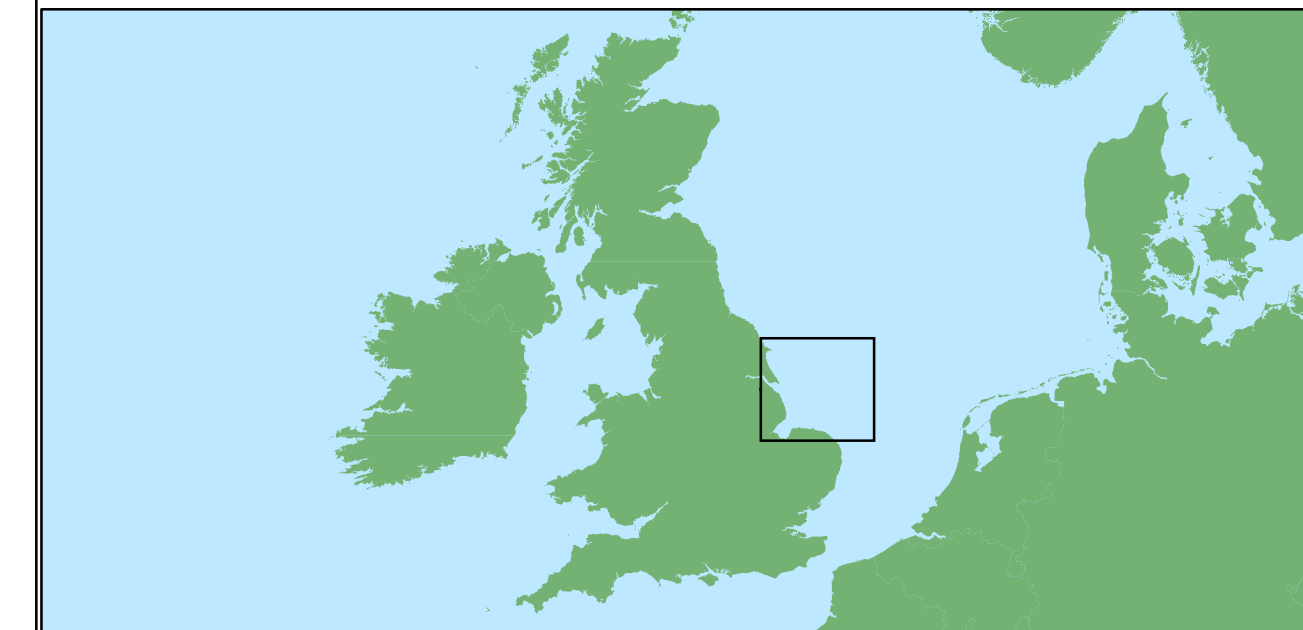


Blade tip:	403m LAT	Observer height:	2m
DTM:	OS T5 and T50 DTM + Woodland (15m Ht)	Surface features:	Included
DTM resolution:	10m	Earth curvature:	Included

### Legend

- ⊙ Viewpoints
  - Indicative Turbine Locations
  - Indicative Offshore Platforms
  - Indicative Offshore Reactive Compensation Platform (ORCP)
  - Array Area
  - Offshore Export Cable Corridor (ECC)
  - Offshore Reactive Compensation Platform (ORCP) Area
  - 10km Radii
  - 60km Study Area
  - Offshore Reactive Compensation Platform (ORCP) 30km Study Area
  - County Boundary
  - District / Unitary Authority Boundary
  - Woodland
- Screening Blade Tip ZTV
- No of Blade Tips Theoretically Visible
- 1 - 10
  - 11 - 20
  - 21 - 30
  - 31 - 40
  - 41 - 50

- Viewpoints:**
1. Spurn Head, near the Yorkshire Wildlife Trust Discovery Centre
  2. Donna Nook
  3. Saltfleetby-Theddlethorpe Dunes
  4. Mablethorpe
  5. Chapel Six Marshes
  6. Lincolnshire Wolds between Rigsby and Haugh
  7. Wells-next-to-the-Sea Beach
  8. Cley Beach
  9. Sheringham
  10. Sheringham Park, Gazebo
  11. Ferry Route Corridor (South West of Site)
  12. Ferry Route Corridor (North East of Site)



Coordinate System: WGS 1984 UTM Zone 31N

0 20 40 km

Scale: 1:300,000

A1 Page Size

Environmental Statement

Array Area Blade Tip ZTV with Surface Feature Screening (A1)

Figure 17.6



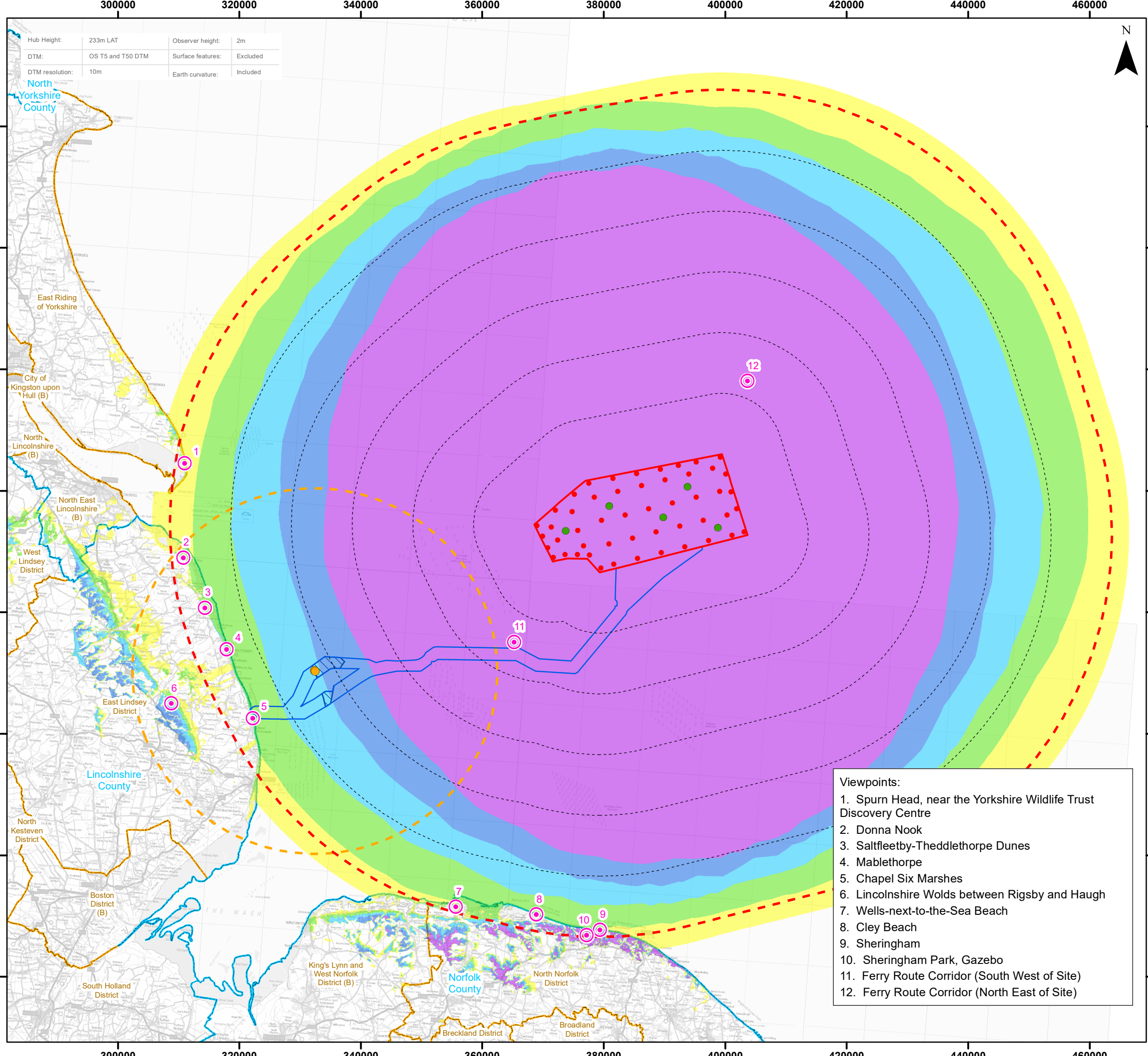
Date: 12/03/2024  
 Produced By: OPEN  
 Revision: v0.4

**open**  
 optimised environments  
 PART OF SLR

Contains ESRI Basemapping;

Document Path: P:\2021\12\16\13\_OutierDowsing\GIS\211613\_GTR4\ES\OFFSHORE\ES03536\_00012\_0661\_0\_211613\_ODOW\_ES\_SLVIA\_Fig17-6\_BT\_ScreeningZTV\_A1.mxd





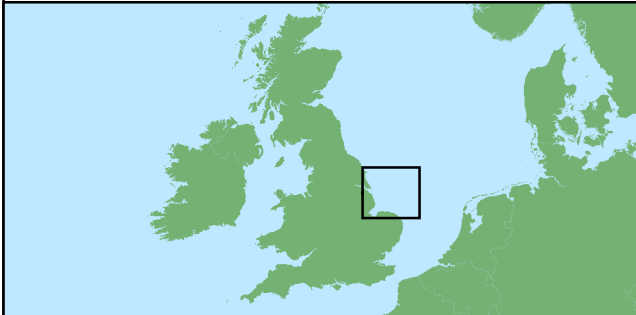
Hub Height:	233m LAT	Observer height:	2m
DTM:	OS T5 and T50 DTM	Surface features:	Excluded
DTM resolution:	10m	Earth curvature:	Included



### Legend

- Viewpoints
  - Indicative Turbine Locations
  - Indicative Offshore Platforms
  - Indicative Offshore Reactive Compensation Platform (ORCP)
  - Array Area
  - Offshore Export Cable Corridor (ECC)
  - Offshore Reactive Compensation Platform (ORCP) Area
  - 10km Radii
  - 60km Study
  - Offshore Reactive Compensation Platform (ORCP) 30km Study Area
  - County Boundary
  - District / Unitary Authority Boundary
- Hub Height ZTV**
- No of Hubs Theoretically Visible**
- 1 - 10
  - 11 - 20
  - 21 - 30
  - 31 - 40
  - 41 - 50

- Viewpoints:**
1. Spurn Head, near the Yorkshire Wildlife Trust Discovery Centre
  2. Donna Nook
  3. Saltfleetby-Theddlethorpe Dunes
  4. Mablethorpe
  5. Chapel Six Marshes
  6. Lincolnshire Wolds between Rigsby and Haugh
  7. Wells-next-to-the-Sea Beach
  8. Cley Beach
  9. Sheringham
  10. Sheringham Park, Gazebo
  11. Ferry Route Corridor (South West of Site)
  12. Ferry Route Corridor (North East of Site)



Coordinate System: WGS 1984 UTM Zone 31N

0 5 10 15 20 km

Scale: 1:600,000

A3 Page Size

Environmental Statement

Array Area Hub Height ZTV (Maximum Hub Height) (A3)

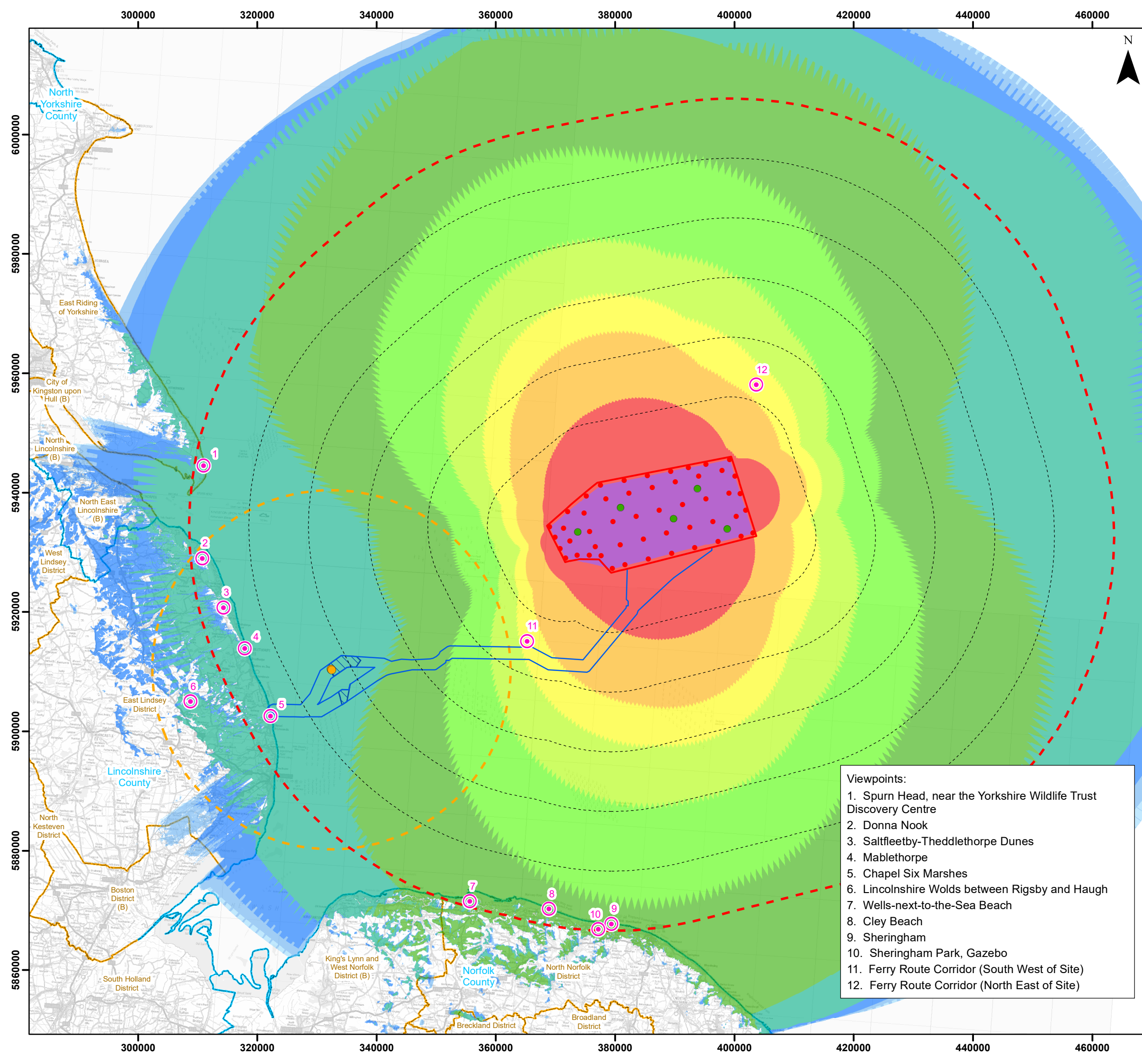
Figure 17.7



Date: 12/03/2024  
 Produced By: OPEN  
 Revision: v0.4

Contains ESRI Basemapping; optimised environments  
 PART OF SLR

Document Path: P:\2021\21613 OuterDosing\GIS\21613\_GTR4\ES\OFFSHORE\0536\00012\_0662\_0\_21613\_ODOW\_ES\_SIVIA\_Fig17.7\_HH\_ZTV.mxd

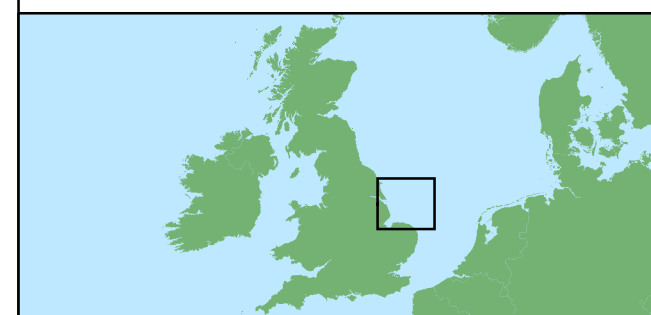


### Legend

- Viewpoints
- Indicative Turbine Locations
- Indicative Offshore Platforms
- Indicative Offshore Reactive Compensation Platform (ORCP)
- Array Area
- Offshore Export Cable Corridor (ECC)
- Offshore Reactive Compensation Platform (ORCP) Area
- 10km Radii
- 60km Study
- Offshore Reactive Compensation Platform (ORCP) 30km Study Area
- County Boundary
- District / Unitary Authority Boundary

**HZTV (Angle in Degrees)**

0
0 - 1
1 - 5
5 - 10
10 - 20
20 - 30
30 - 40
40 - 50
50 - 60
60 - 90
90 - 180
180 - 360



- Viewpoints:**
1. Spurn Head, near the Yorkshire Wildlife Trust Discovery Centre
  2. Donna Nook
  3. Saltfleetby-Theddlethorpe Dunes
  4. Mablethorpe
  5. Chapel Six Marshes
  6. Lincolnshire Wolds between Rigsby and Haugh
  7. Wells-next-to-the-Sea Beach
  8. Cley Beach
  9. Sheringham
  10. Sheringham Park, Gazebo
  11. Ferry Route Corridor (South West of Site)
  12. Ferry Route Corridor (North East of Site)

Coordinate System: WGS 1984 UTM Zone 31N

0 5 10 15 20 km

**Scale: 1:600,000** A3 Page Size

**Environmental Statement**

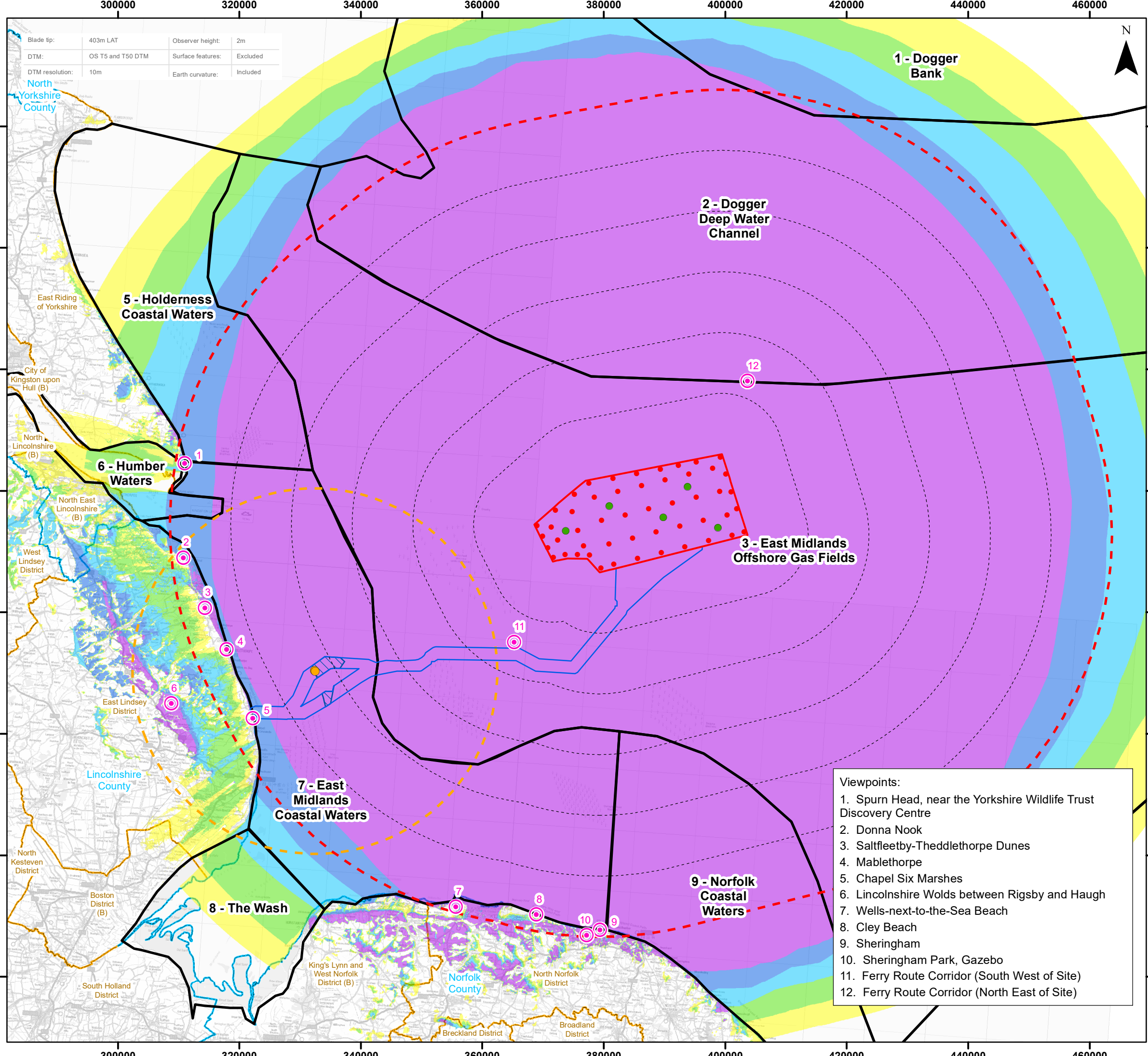
Array Area Horizontal Angle ZTV (Maximum Height) (A3)

Figure 17.8

**open**  
optimised environments

Contains ESRI Basemapping;  
PART OF SLR

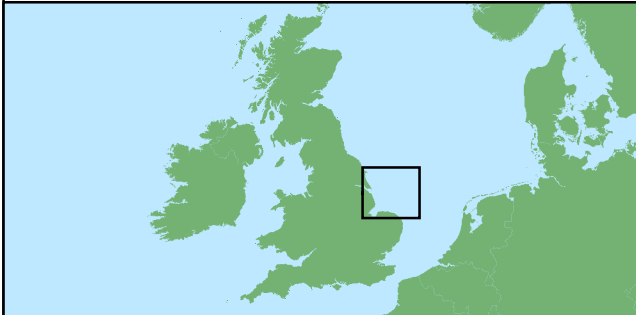
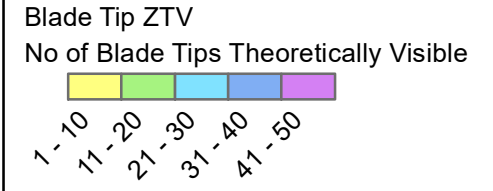
Date: 12/03/2024  
Produced By: OPEN  
Revision: v0.4



Blade tip:	403m LAT	Observer height:	2m
DTM:	OS T5 and T50 DTM	Surface features:	Excluded
DTM resolution:	10m	Earth curvature:	Included

### Legend

- ⊙ Viewpoints
- Indicative Turbine Locations
- Indicative Offshore Platforms
- Indicative Offshore Reactive Compensation Platform (ORCP)
- Array Area
- Offshore Export Cable Corridor (ECC)
- Offshore Reactive Compensation Platform (ORCP) Area
- 10km Radii
- 60km Study Area
- Offshore Reactive Compensation Platform (ORCP) 30km Study Area
- County Boundary
- District / Unitary Authority Boundary
- Seascape Character Area



Coordinate System: WGS 1984 UTM Zone 31N  
0 5 10 15 20 km  
Scale: 1:600,000  
A3 Page Size

- Viewpoints:
1. Spurn Head, near the Yorkshire Wildlife Trust Discovery Centre
  2. Donna Nook
  3. Saltfleetby-Theddlethorpe Dunes
  4. Mablethorpe
  5. Chapel Six Marshes
  6. Lincolnshire Wolds between Rigsby and Haugh
  7. Wells-next-to-the-Sea Beach
  8. Cley Beach
  9. Sheringham
  10. Sheringham Park, Gazebo
  11. Ferry Route Corridor (South West of Site)
  12. Ferry Route Corridor (North East of Site)

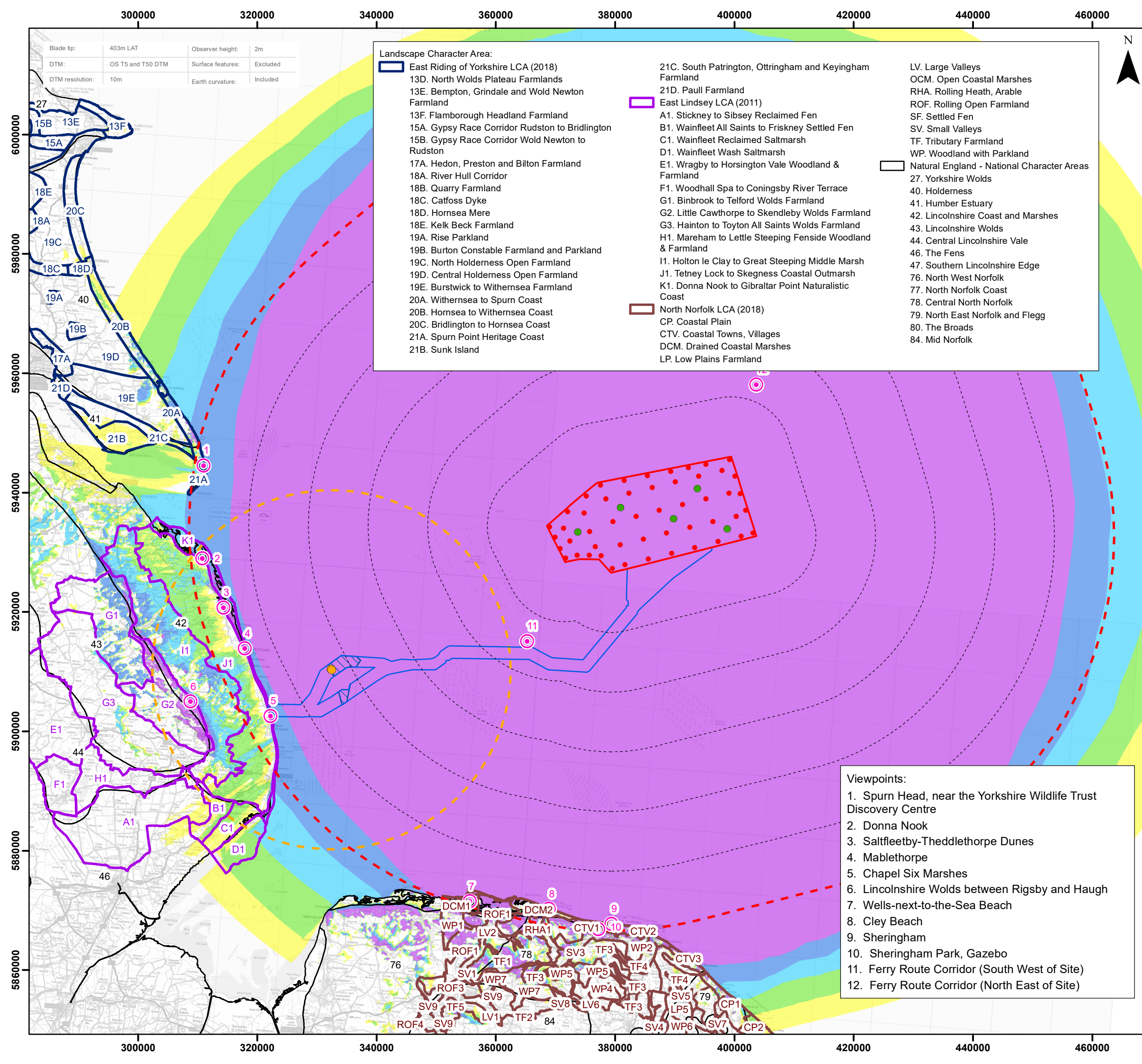
Environmental Statement  
Array Area Blade Tip ZTV with Seascape Character)  
Figure 17.9



Date: 12/03/2024  
Produced By: OPEN  
Revision: v0.4

**open** optimised environments  
PART OF SLR

Document Path: P:\2021\12\1613\_OuterDosing\GIS\211613\_GTR4\ES\OFFSHORE\ES0356\00012\_0664\_0\_211613\_ODOW\_ES\_SILVIA\_Fig17-9\_BT\_ZTV\_Seascape.mxd



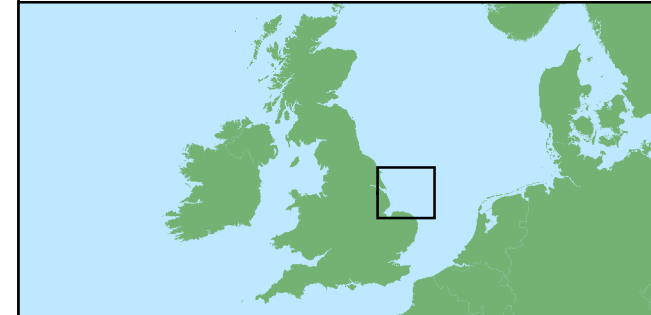
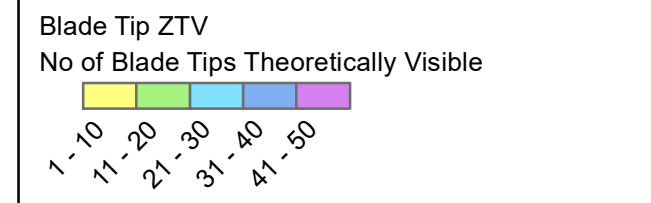
Blade tip: 403m LAT  
 DTM: OS T5 and T50 DTM  
 DTM resolution: 10m  
 Observer height: 2m  
 Surface features: Excluded  
 Earth curvature: Included

**Landscape Character Area:**

<ul style="list-style-type: none"> <li>East Riding of Yorkshire LCA (2018)</li> <li>13D. North Wolds Plateau Farmlands</li> <li>13E. Bempton, Grindale and Wold Newton Farmland</li> <li>13F. Flamborough Headland Farmland</li> <li>15A. Gypsy Race Corridor Rudston to Bridlington</li> <li>15B. Gypsy Race Corridor Wold Newton to Rudston</li> <li>17A. Hedon, Preston and Bilton Farmland</li> <li>18A. River Hull Corridor</li> <li>18B. Quarry Farmland</li> <li>18C. Catfoss Dyke</li> <li>18D. Hornsea Mere</li> <li>18E. Kelk Beck Farmland</li> <li>19A. Rise Parkland</li> <li>19B. Burton Constable Farmland and Parkland</li> <li>19C. North Holderness Open Farmland</li> <li>19D. Central Holderness Open Farmland</li> <li>19E. Burstwick to Withernsea Farmland</li> <li>20A. Withernsea to Spurn Coast</li> <li>20B. Hornsea to Withernsea Coast</li> <li>20C. Bridlington to Hornsea Coast</li> <li>21A. Spurn Point Heritage Coast</li> <li>21B. Sunk Island</li> </ul>	<ul style="list-style-type: none"> <li>21C. South Patrington, Ottringham and Keyingham Farmland</li> <li>21D. Paull Farmland</li> <li>East Lindsey LCA (2011)</li> <li>A1. Stickney to Sibsey Reclaimed Fen</li> <li>B1. Wainfleet All Saints to Friskney Settled Fen</li> <li>C1. Wainfleet Reclaimed Saltmarsh</li> <li>D1. Wainfleet Wash Saltmarsh</li> <li>E1. Wragby to Horsington Vale Woodland &amp; Farmland</li> <li>F1. Woodhall Spa to Coningsby River Terrace</li> <li>G1. Binbrook to Telford Wolds Farmland</li> <li>G2. Little Cawthorpe to Skendleby Wolds Farmland</li> <li>G3. Hainton to Toyton All Saints Wolds Farmland</li> <li>H1. Mareham to Lettle Steeping Fenside Woodland &amp; Farmland</li> <li>I1. Holton le Clay to Great Steeping Middle Marsh</li> <li>J1. Tetney Lock to Skegness Coastal Outmarsh</li> <li>K1. Donna Nook to Gibraltar Point Naturalistic Coast</li> <li>North Norfolk LCA (2018)</li> <li>CP. Coastal Plain</li> <li>CTV. Coastal Towns, Villages</li> <li>DCM. Drained Coastal Marshes</li> <li>LP. Low Plains Farmland</li> </ul>	<ul style="list-style-type: none"> <li>LV. Large Valleys</li> <li>OCM. Open Coastal Marshes</li> <li>RHA. Rolling Heath, Arable</li> <li>ROF. Rolling Open Farmland</li> <li>SF. Settled Fen</li> <li>SV. Small Valleys</li> <li>TF. Tributary Farmland</li> <li>WP. Woodland with Parkland</li> <li>Natural England - National Character Areas</li> <li>27. Yorkshire Wolds</li> <li>40. Holderness</li> <li>41. Humber Estuary</li> <li>42. Lincolnshire Coast and Marshes</li> <li>43. Lincolnshire Wolds</li> <li>44. Central Lincolnshire Vale</li> <li>46. The Fens</li> <li>47. Southern Lincolnshire Edge</li> <li>76. North West Norfolk</li> <li>77. North Norfolk Coast</li> <li>78. Central North Norfolk</li> <li>79. North East Norfolk and Flegg</li> <li>80. The Broads</li> <li>84. Mid Norfolk</li> </ul>
--	---	---

**Legend**

- Viewpoints
- Indicative Turbine Locations
- Indicative Offshore Platforms
- Indicative Offshore Reactive Compensation Platform (ORCP)
- Array Area
- Offshore Export Cable Corridor (ECC)
- Offshore Reactive Compensation Platform (ORCP) Area
- 10km Radii
- 60km Study Area
- Offshore Reactive Compensation Platform (ORCP) 30km Study Area
- Natural England - National Character Areas
- East Riding of Yorkshire LCA (2018)
- East Lindsey LCA (2011)
- North Norfolk LCA (2018)



Coordinate System: WGS 1984 UTM Zone 31N  
 0 5 10 15 20 km  
 Scale: 1:600,000  
 A3 Page Size

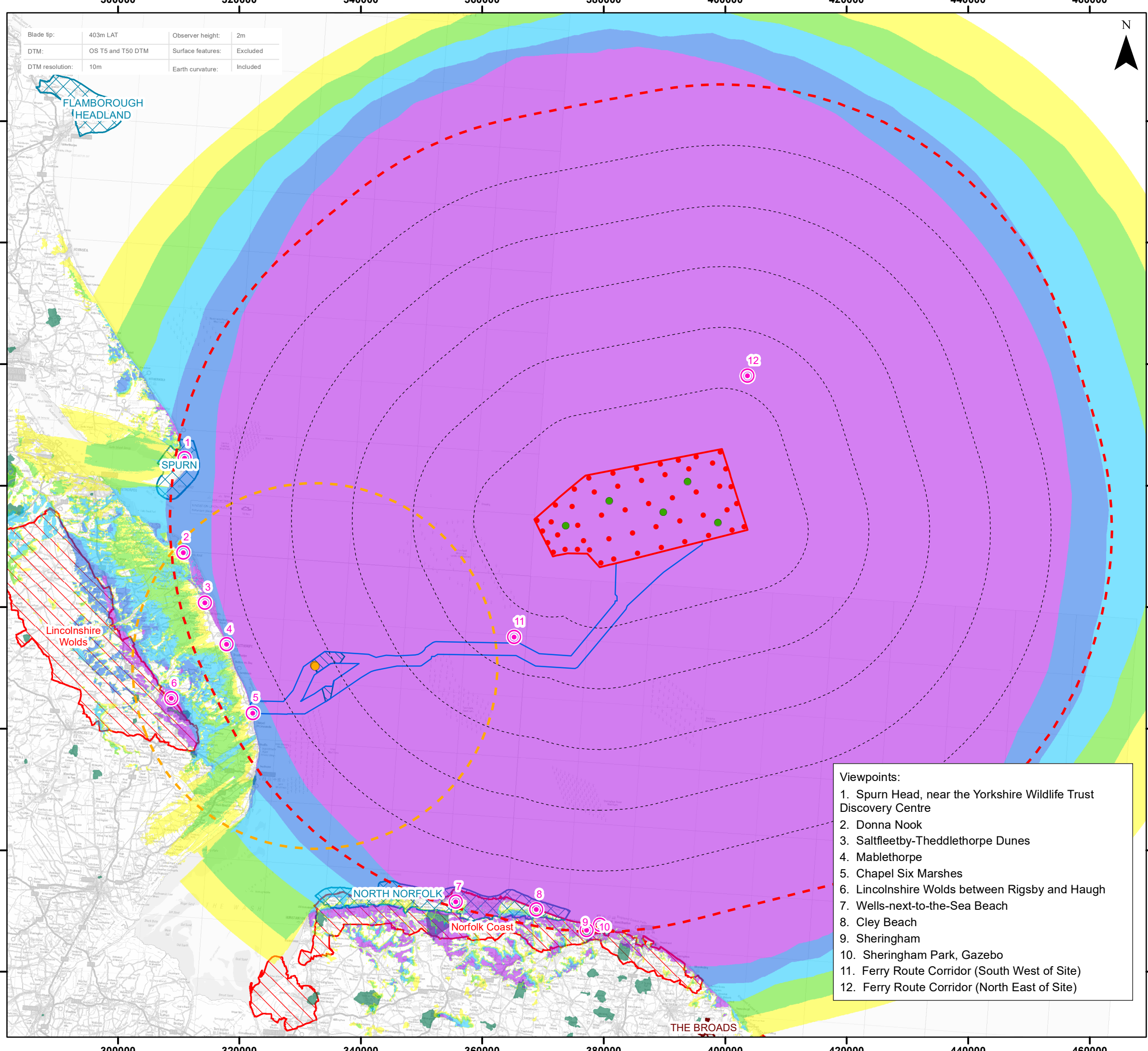
- Viewpoints:**
1. Spurn Head, near the Yorkshire Wildlife Trust Discovery Centre
  2. Donna Nook
  3. Saltfleetby-Theddlethorpe Dunes
  4. Mablethorpe
  5. Chapel Six Marshes
  6. Lincolnshire Wolds between Rigsby and Haugh
  7. Wells-next-to-the-Sea Beach
  8. Cley Beach
  9. Sheringham
  10. Sheringham Park, Gazebo
  11. Ferry Route Corridor (South West of Site)
  12. Ferry Route Corridor (North East of Site)

Environmental Statement  
 Array Area Blade Tip ZTV with Landscape Character  
 Figure 17.10

Date: 12/03/2024  
 Produced By: OPEN  
 Revision: v0.4

Contains ESRI Basemapping;  
 optimised environments  
 PART OF SLR

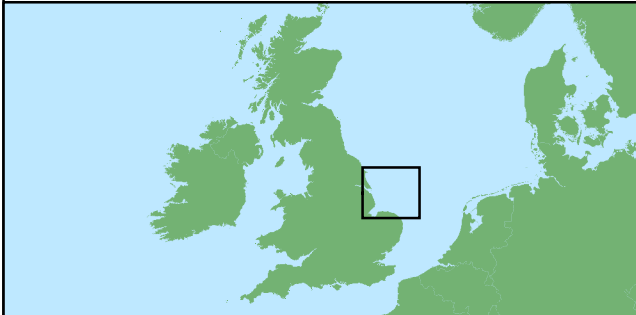
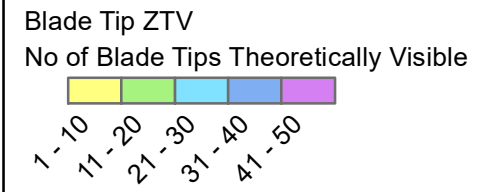
Document Path: P:\2021\12\1613 OuterDowing\GIS\211613\_GTR4\ES\OFFSHORE\0536\00012\_0665\0\_211613\_ODOW\_ES\_SIVIA\_Fig17-10\_BT\_ZTV\_LCA.mxd



Blade tip:	403m LAT	Observer height:	2m
DTM:	OS T5 and T50 DTM	Surface features:	Excluded
DTM resolution:	10m	Earth curvature:	Included

### Legend

- Viewpoints
- Indicative Turbine Locations
- Indicative Offshore Platforms
- Indicative Offshore Reactive Compensation Platform (ORCP)
- Array Area
- Offshore Export Cable Corridor (ECC)
- Offshore Reactive Compensation Platform (ORCP) Area
- 10km Radii
- 60km Study Area
- Offshore Reactive Compensation Platform (ORCP) 30km Study Area
- National Parks
- Heritage Coast
- Parks and Gardens
- Areas of Outstanding Natural Beauty



- Viewpoints:**
1. Spurn Head, near the Yorkshire Wildlife Trust Discovery Centre
  2. Donna Nook
  3. Saltfleetby-Theddlethorpe Dunes
  4. Mablethorpe
  5. Chapel Six Marshes
  6. Lincolnshire Wolds between Rigsby and Haugh
  7. Wells-next-to-the-Sea Beach
  8. Cley Beach
  9. Sheringham
  10. Sheringham Park, Gazebo
  11. Ferry Route Corridor (South West of Site)
  12. Ferry Route Corridor (North East of Site)

Coordinate System: WGS 1984 UTM Zone 31N  
 0 5 10 15 20 km  
  
**Scale: 1:600,000** A3 Page Size

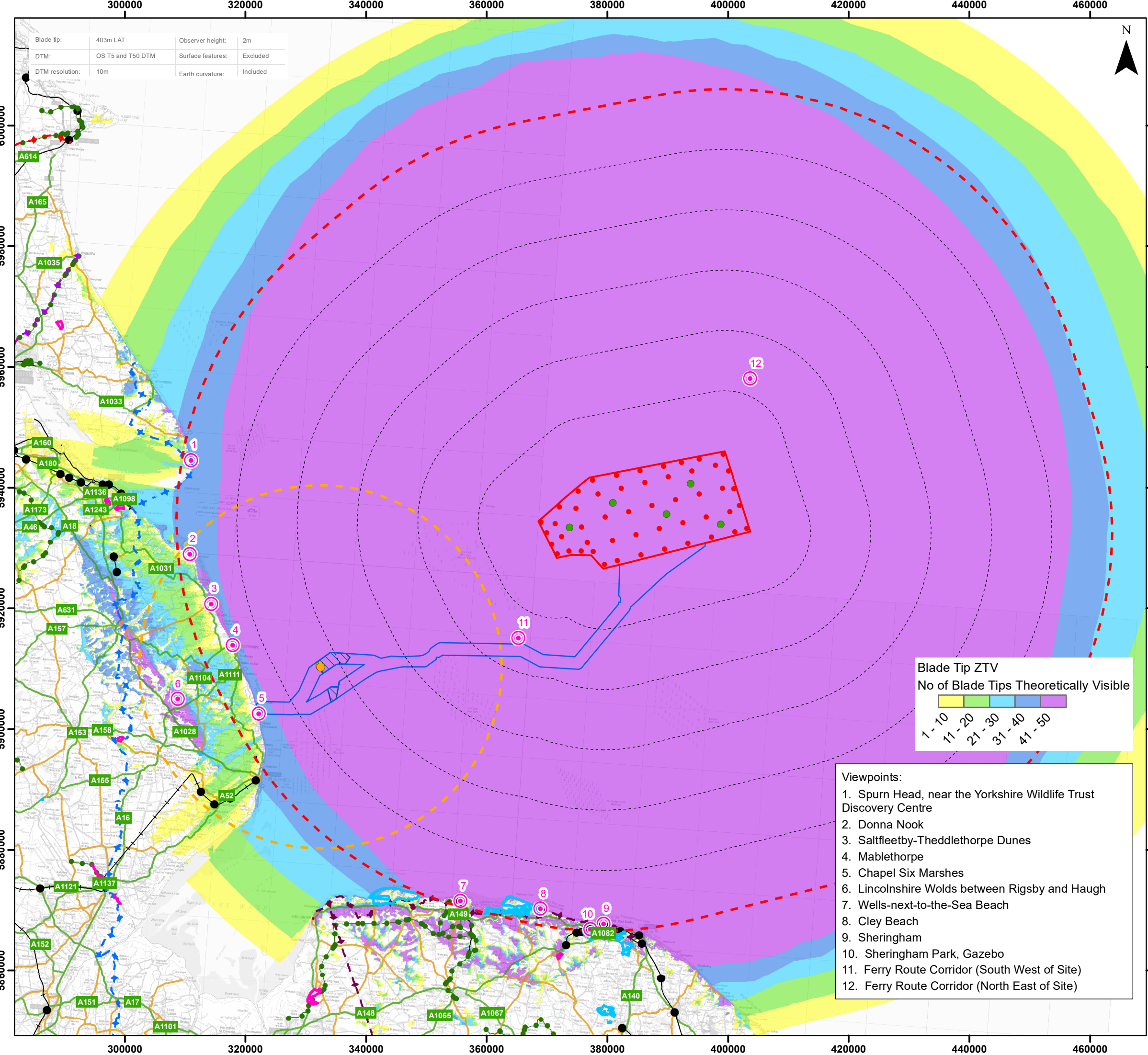
**Environmental Statement**  
 Array Area Blade Tip ZTV  
 with Landscape Designations  
 Figure 17.11



Date: 12/03/2024  
 Produced By: OPEN Contains ESRI Basemapping;  
 Revision: v0.4 PART OF SLR

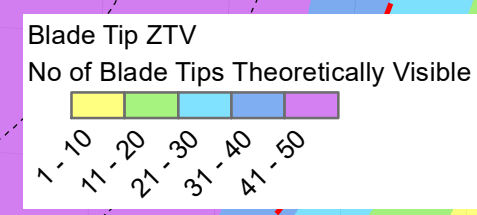
© Crown copyright and database rights (2024) Ordnance Survey 0100031673  
 © Natural England copyright. © Historic England (2024). Contains Ordnance Survey data © Crown copyright and database right (2024).  
 Contains public sector information licensed under the Open Government Licence v3.0.

Document Path: P:\2021\12\1613 OuterDosing\GIS\211613\_GTR4\ES\OFFSHORE\0536\00012\_0666\_0\_211613\_ODOW\_ES\_SLVIA\_Fig17-11\_BT\_ZTV\_LD.mxd

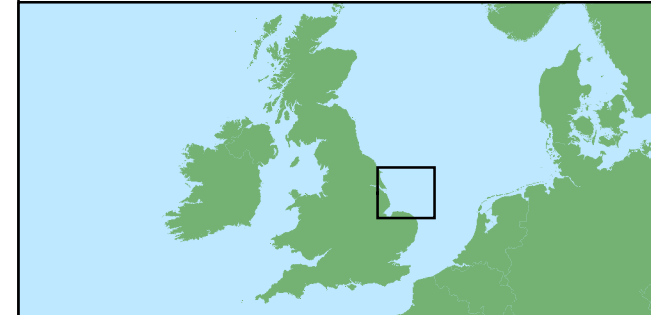


### Legend

- ⊙ Viewpoints
- Indicative Turbine Locations
- Indicative Offshore Platforms
- Indicative Offshore Reactive Compensation Platform (ORCP)
- Array Area
- Offshore Export Cable Corridor (ECC)
- Offshore Reactive Compensation Platform (ORCP) Area
- 10km Radii
- 60km Study Area
- Array Area
- Offshore Export Cable Corridor (ECC)
- Offshore Reactive Compensation Platform (ORCP) Area
- Offshore Reactive Compensation Platform (ORCP) 30km Study Area
- Country Parks
- National Trust Estate
- Long Distance Walks
- Aerospace Way
- Greenwich Meridian Trail
- Peddars Way And Norfolk Coast Path
- Trans Pennine Trail
- National Cycle Network
- Railway Station
- Railway Track
- A Road
- B Road



- Viewpoints:**
1. Spurn Head, near the Yorkshire Wildlife Trust Discovery Centre
  2. Donna Nook
  3. Saltfleetby-Theddlethorpe Dunes
  4. Mablethorpe
  5. Chapel Six Marshes
  6. Lincolnshire Wolds between Rigsby and Haugh
  7. Wells-next-to-the-Sea Beach
  8. Cley Beach
  9. Sheringham
  10. Sheringham Park, Gazebo
  11. Ferry Route Corridor (South West of Site)
  12. Ferry Route Corridor (North East of Site)



Coordinate System: WGS 1984 UTM Zone 31N  
 0 5 10 15 20 km  
 Scale: 1:600,000 A3 Page Size

Environmental Statement  
 Array Area Blade Tip ZTV with Visual Receptors  
 Figure 17.12



Date: 12/03/2024  
 Produced By: OPEN  
 Revision: v0.4

Contains ESRI Basemapping;  
 optimised environments  
 PART OF SLR

© Crown copyright and database rights (2024) Ordnance Survey 0100031673  
 © Natural England copyright. Contains Ordnance Survey data © Crown copyright and database right (2024).  
 National Cycle Route data supplied by Sustrans contains Ordnance Survey data (© Crown copyright and database rights (2024)).

Document Path: P:\2021\12\1613 OuterDowsing\GIS\12\1613\_GTR4\ES\OFFSHORE\0536\00012\0667\_0\_21\1613\_ODOW\_ES\_SIVIA\_Fig17.12\_BT\_ZTV\_VR.mxd